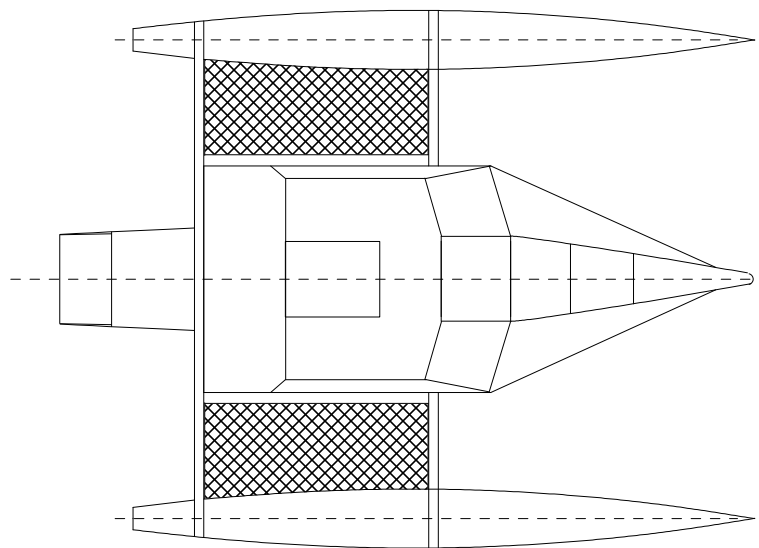
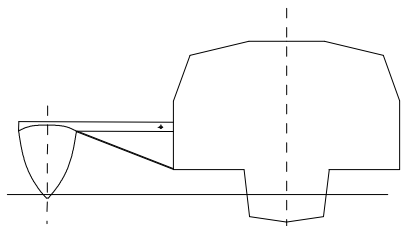


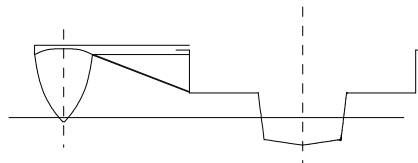
Quattro 16 shown, some alternatives are
NACRA 5.2, Condor/Hurricane 4.9, Dart 18
but not Hobie 16 (the hulls have too little buoyancy
and the beam mounting is unsuitable)



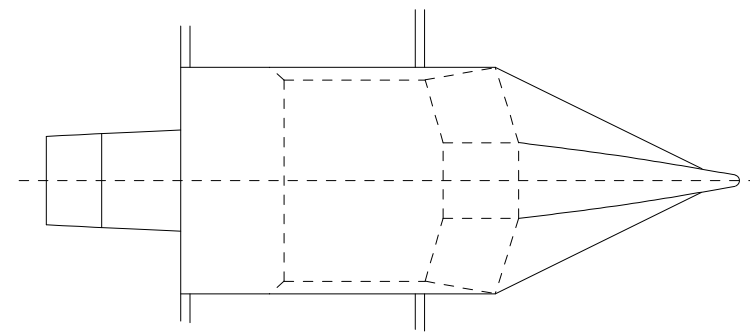
cross sections mainhull



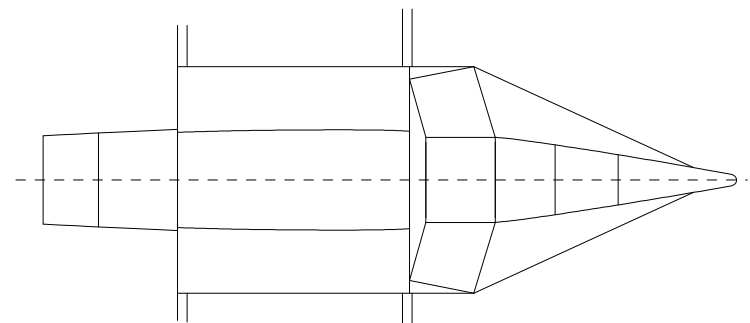
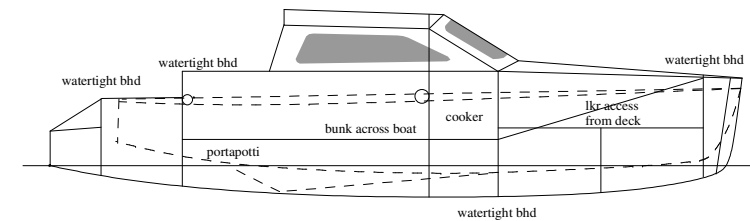
cabin version
(cabin is removable)



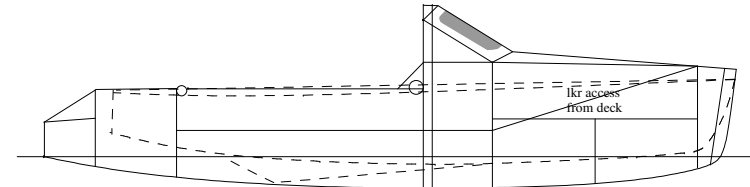
open deck version



cabin version



open deck version



**Strike 18 trimaran
beach cat conversion
using beach cat rig and hulls.**

**Provisional Study Plan
Subject to Change**

LOA 5.5m
LWL 5.35m
BOA 4.3m
Sail Area (Q16)
Mainsail 13.5sqm
Jib 5.67sqm
Empty weight 250kgs
Loaded weight 600kgs
Open deck version seats 6
Cabin version sleeps 2

Strike 18
Study Plan
Copyright WOODS DESIGNS
Jan 2008